

ELEMENTI TECNICI
TECHNICAL ELEMENTS

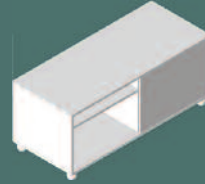
ALLUNGHI DATTILO, CASSETTIERE, MOBILI DI SERVIZIO



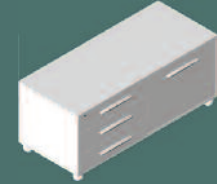
42x56x56h



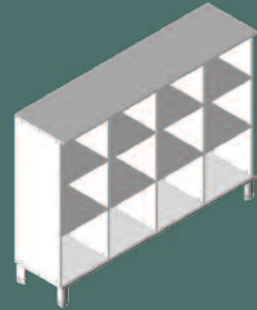
45x56x56h



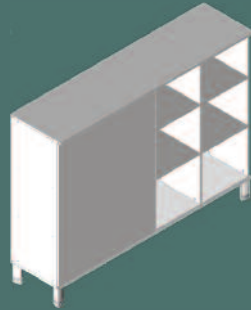
140x60x56h



120x60x56h



180x47x135h



180x47x135h



90x45x80h



45x45x80h



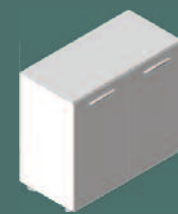
90x45x80h



45x45x80h



45x45x80h



90x45x80h



45x45x80h

ALLUNGHI DATILO, CASSETTIERE, MOBILI DI SERVIZIO



90x45x196h



45x45x196h



90x45x196h



45x45x196h



90x45x196h



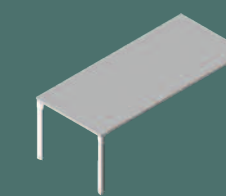
45x45x196h



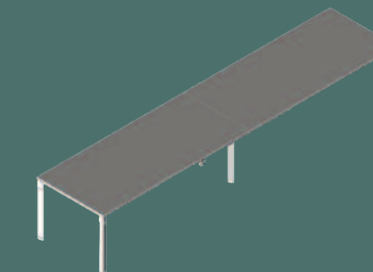
120x60x73h



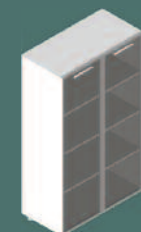
160x80x73h



180/200x90x73h



390/260/110x90x73h



90x45x157h



45x45x157h



90x45x157h



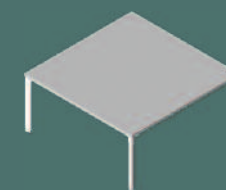
45x45x157h



90x45x157h



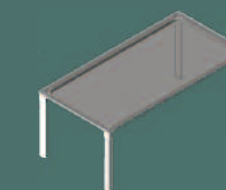
45x45x157h



160x160x73h



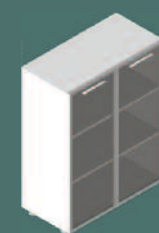
120x60x72h



160x80x72h



180/200x90x72h



90x45x119h



45x45x119h



90x45x119h



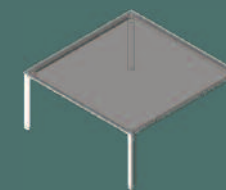
45x45x119h



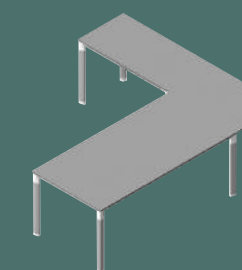
90x45x119h



45x45x119h



160x160x72h



260/240/210x60x73h